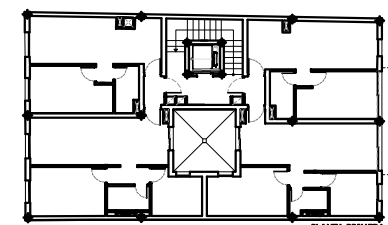
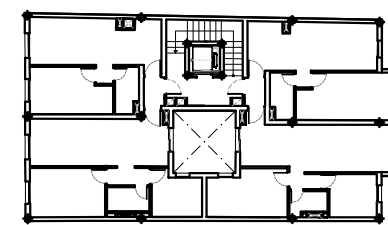
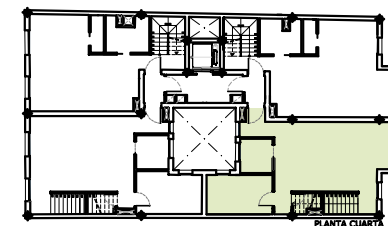
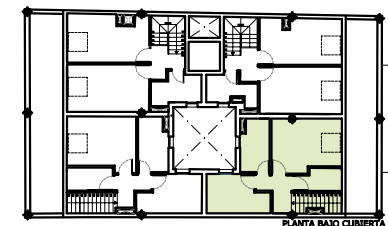


TIPOLOGÍA IIID - BV 8

1 unidad

| SUPERFICIE ÚTIL | | SUPERFICIE CONSTRUIDA | |
|------------------------------|--|------------------------------|--|
| P.B=39,44m ² | | P.B=49,68m ² | |
| P.A=28,64m ² | | P.A=45,61m ² | |
| TOTAL Su=68,08m ² | | TOTAL Sc=95,29m ² | |



UBICACIÓN de TIPOLOGÍAS EN PLANTA -
Escala 1/400